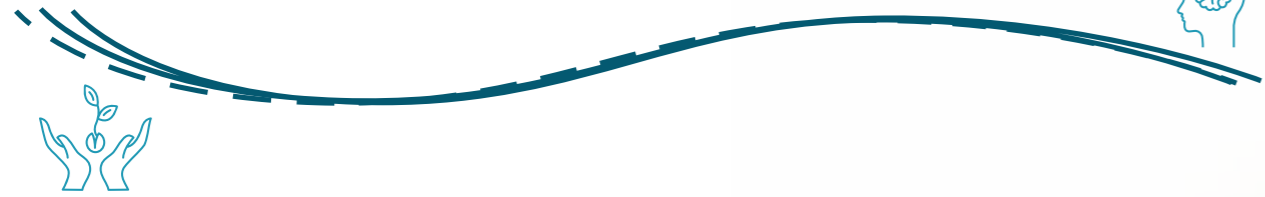


# Realize the Potential

From our **expertise** to your **Brand Portfolio**



“From new product innovation to the collaborative improvement of your existing portfolio, SFI Health Solutions is a global specialist in pharmaceutical and nutraceutical CDMO ”

**SFI Health Solutions: your CDMO partner**

As part of SFI Health Group, SFI Health Solutions is a full-service Contract Development and Manufacturing Organisation (CDMO) you can trust to Design, Develop and Deliver natural healthcare products to the good manufacturing practices (GMP/cGMP) for manufacturing, product development and packaging



**DESIGN**

This first phase focuses on concept creation and idea scoping to determine it's feasibility, achievability and potential in commercial and regulatory contexts.



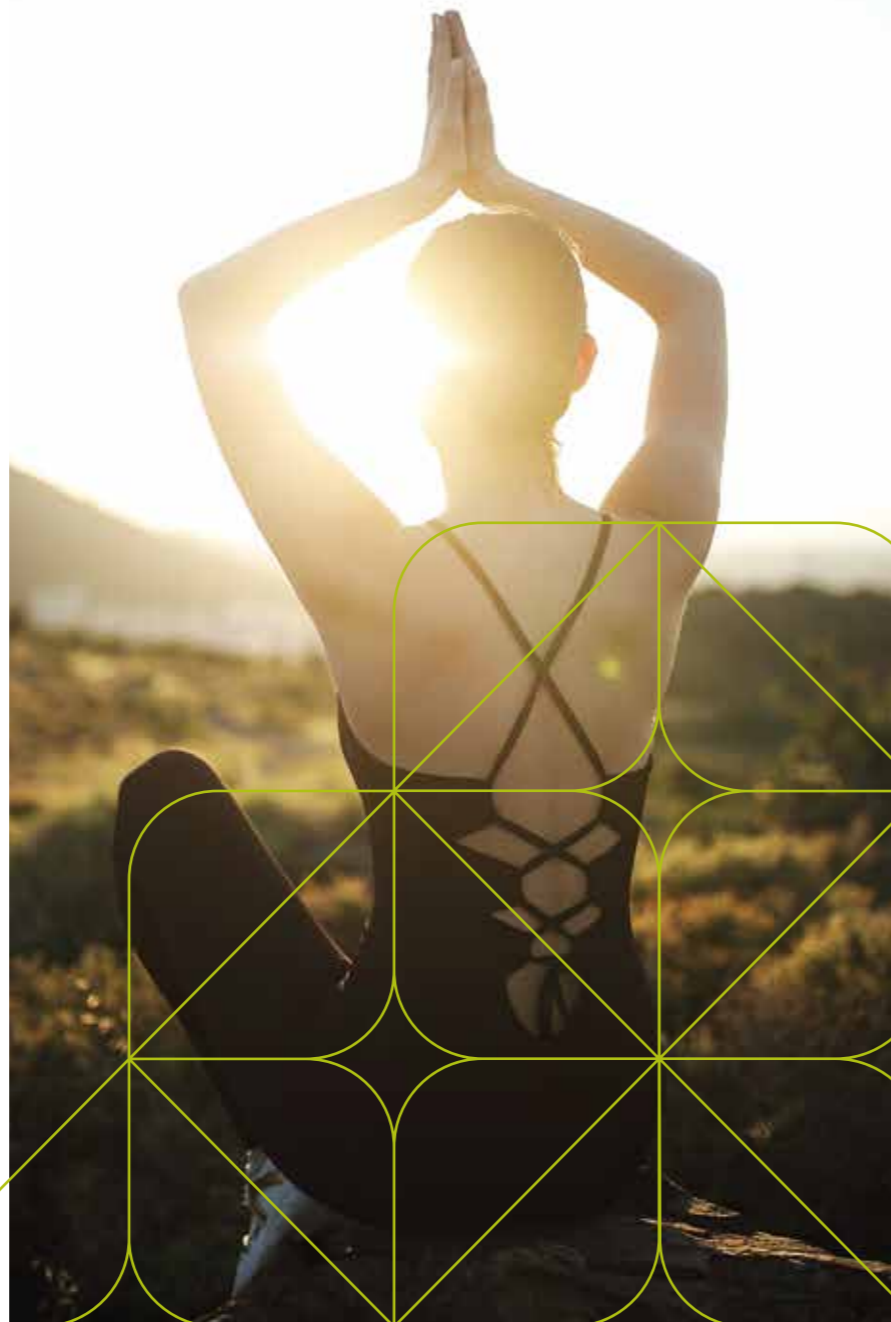
**DEVELOP**

During this stage, theoretical solutions are transformed into realities that can literally be held in the hand – tangible products with defined and tested technical specifications.



**DELIVER**

Commercial-scale production and packaging is the third pillar of our service offering. In this stage, the product is made to commercial quantities ready for distribution to our clients' existing and new markets.



Our three manufacturing plants worldwide are able to deliver and manage the following:



**3**

Manufacturing sites in Switzerland (20,000m<sup>2</sup>), US (6,700m<sup>2</sup>), and UK (8,000m<sup>2</sup>)



**26**

Production and packaging lines running up to 3 shifts



**50M**

Average finished packs per year



**880**

SKU managed



**>100**

Countries serviced, with offices in every region

DELIVERABLE		CH	UK	USA
PRODUCTION	Capsule filling	X	X	X
	Tableting	X	X	X
	Dry blending		X	X
	Hard gelatin capsules	X	X	X
	HPMC capsules	X	X	X
	Liquid forms	X	X	
	Milling			X
	Mixing		X	
	Powder blending	X	X	X
	Wet granules	X		X
PACKAGING	Coating	X		X
	Blister	X	X	
	Solids in bottles	X	X	X
	Powder into bottles		X	X
	Liquids into bottles	X	X	
	Bottle labelling	X		X
	Powder/granules in sticks	X		
	Product serialisation via label and product coding	X		
CERTIFICATIONS	FDA 21 CFR parts 111	X	X	X
	FDA 21 CFR parts 117			X
	Swissmedic inspected and approved	X		
	TGA inspected and approved	X	X	
	ANVISA inspected and approved	X		
	EU Organic regulation		X	
	Halal (upon request)			
	Kosher (upon request)			
	MHRA inspected and approved		X	

**SFI Health solutions is the CDMO you are looking for because of:**

- ① Longstanding expertise with natural ingredients
- ① Application of ‘quality by design’ approach to all stages and processes
- ① Adaptability to Design, Develop and Deliver solutions on a challenging time frame, that consider regulatory compliance implications right from beginning
- ① **Flexibility:** can focus exclusively on nominated project areas or can broaden the scope in accordance with customer need, time and cost parameters
- ① **Excellent Project management** process in place allow the clients to reduce complexity and save time







# Cognitive & Well-Being Private Label Portfolio

Guided by emerging research, as well as a passion for applying science to nature, **SFI Health Solutions** is committed to both developing and distributing products for private brands supporting whole-body health by targeting different therapeutic areas.

This creates the possibility for our clients to widen or refresh their own product portfolio and launch these innovative natural products under their own brand.

## 5 reasons to choose SFI Health Solutions Private Label

1. **Premium quality, ready to use Swiss-made solutions**
2. **Galenical formulations combining cutting-edge, latest scientific advances on natural ingredients with Traditional Herbal Medicine knowledge;**
3. **High-quality active ingredients chosen for their strong proprietary clinical support, maximising biological origin, solvent-free extraction processes and sustainable/traceable origin of raw materials.**
4. **Tailor-made solutions thought carefully to satisfy the final customers’ health needs by:**
  - a. Reducing excipients
  - b. Selection of hypoallergenic products
  - c. Preference for vegetarian hard capsules without gelatin
  - d. Selection of talc-free coating systems for tablets
5. **Reduction of external packaging and maximization of recyclable materials to satisfy sustainability concern of the final customer and reduce the environmental footprint :**
  - a. Maximise the use of R-PET bottles from recycled material
  - b. Usage of folding boxes and other secondary packaging
  - c. No leaflet if not requested

	Our Solution	EFSA Indications	Who is it for?	How is it taken?	How long for?	Ingredients	Points of strenghts
IMMUNITY	 <p><b>PhytoDefense</b> 30 or 60 FCT in blister with folding box</p>	With vitamin C and zinc that support the correct function of the immune system.	18-65 years	1 tab/day	Seasonal or year-round support - Rapidly active on strengthening the immune system defenses	Microalgal biomass rich in beta-glucans, vitamin C, vitamin D3 from lichen, selenium and zinc	<ul style="list-style-type: none"> <li>• Vegetarian-friendly</li> <li>• Yeast-free</li> <li>• Clinical studies on the ingredients available</li> </ul>
COGNITIVE	 <p><b>MemorEase</b> 30 or 60 HPMC vegetarian capsules in blister with folding box Capsule size: 0</p>	With vitamin B12 that contributes to normal neurological and psychological function.	18-65 years	2 caps/day, possibly one in the morning and one at least one hour before bedtime	At least 4 weeks	Ashwagandha root and Saffron stigma extracts, vitamin B12	<ul style="list-style-type: none"> <li>• Suitable for Vegetarians</li> <li>• Sustainable sourcing of botanical ingredients”</li> <li>• Clinical studies on the ingredients available</li> </ul>
SLEEP	 <p><b>Day&amp;Night</b> 28+28 or 56+56 tablets in dual blisters with folding box</p>	With B vitamins that support normal psychological function, reduce tiredness and fatigue and support mental performance. With melatonin that contributes to the reduction of time taken to fall asleep*. *The beneficial effect is obtained by consuming 1 mg of melatonin close to bedtime.	18-65 years	2 tabs/day (one Day tablet in the morning and one Night tablet at least one hour before bedtime)	At least 4 weeks	DAY: French melon extract (source of antioxidant enzymes), methylfolate, B1, B2, B3, B6 NIGHT: Pistachio extract standardized in melatonin	<ul style="list-style-type: none"> <li>• Suitable for Vegetarians</li> <li>• Clinical studies on the ingredients available</li> </ul>
CARDIOVASCULAR	 <p><b>CardioProtect Duo</b> 30/60 tablets + 30/60 softgel capsules packed in dual blisters with folding box</p>	With vitamin B1, EPA and DHA that contribute to the normal function of the heart.* *The beneficial effect is obtained with a daily intake of 250 mg of EPA and DHA.	25-65 years	1 tab + 1 softgel/day	At least 4 weeks	TAB: Grape seed extract, vit. E, vit. K2, vit. B1 SOFTGEL: omega-3, astaxanthin, Coenzyme Q10	<ul style="list-style-type: none"> <li>• Sustainable, traceable, eco-friendly production of omega-3 (FOS, GOED and MarinTrust certified)</li> <li>• Clinical studies on the ingredients available</li> <li>• Free from added sugar</li> </ul>
ENERGY	 <p><b>PerforManGO</b> 30 or 60 sticks of granules with folding box</p>	With magnesium that reduces tiredness and fatigue, supports normal muscle, nervous system function and electrolyte balance.	18-65 years	2 sticks/day	At least 4 weeks	Mango leaf and fruit extracts, magnesium, L-carnitine and taurine	<ul style="list-style-type: none"> <li>• Suitable for Vegetarians</li> <li>• Free from added sugar</li> <li>• Non-addictive formulation - no caffeine inside</li> <li>• Clinical studies on the ingredients available</li> </ul>
DIGESTIVE	 <p><b>OptiGut</b> 30 or 60 chewable tablets in plastic jar with folding box</p>	With calcium that supports the normal function of digestive enzymes.	18-65 years	2 tabs/day	At least 8 weeks	Blended botanical extract (prickle pear cladode+olive leaf), magnesium carbonate, calcium carbonate	<ul style="list-style-type: none"> <li>• Free from added sugar</li> <li>• Suitable for Vegetarians</li> <li>• Clinical studies on the ingredients available”</li> </ul>

# SFI Health Solutions



## A NEW BREED OF CDMO


We **Design** with deep understanding of our clients' challenges and compliance parameters.

We **Develop** high-quality, cost-effective solutions tested to perform, at speeds traditional CDMOs don't have the adaptability to match.

We **Deliver** at scale with flexibility, seamlessness and the ability to quickly pivot with changes in the market.

## EUROPE, MIDDLE EAST & AFRICA (EMEA)

Soho Flordis International  
Switzerland SA  
Via Mulini, 6934 Bioggio, Switzerland  
P: +41 91 610 3111  
E: Solutions.EMEA@sfihealth.com  
www.sfihealthsolutions.com

follow us on   
[linkedin.com/company/sfi-health-solutions](https://www.linkedin.com/company/sfi-health-solutions)